

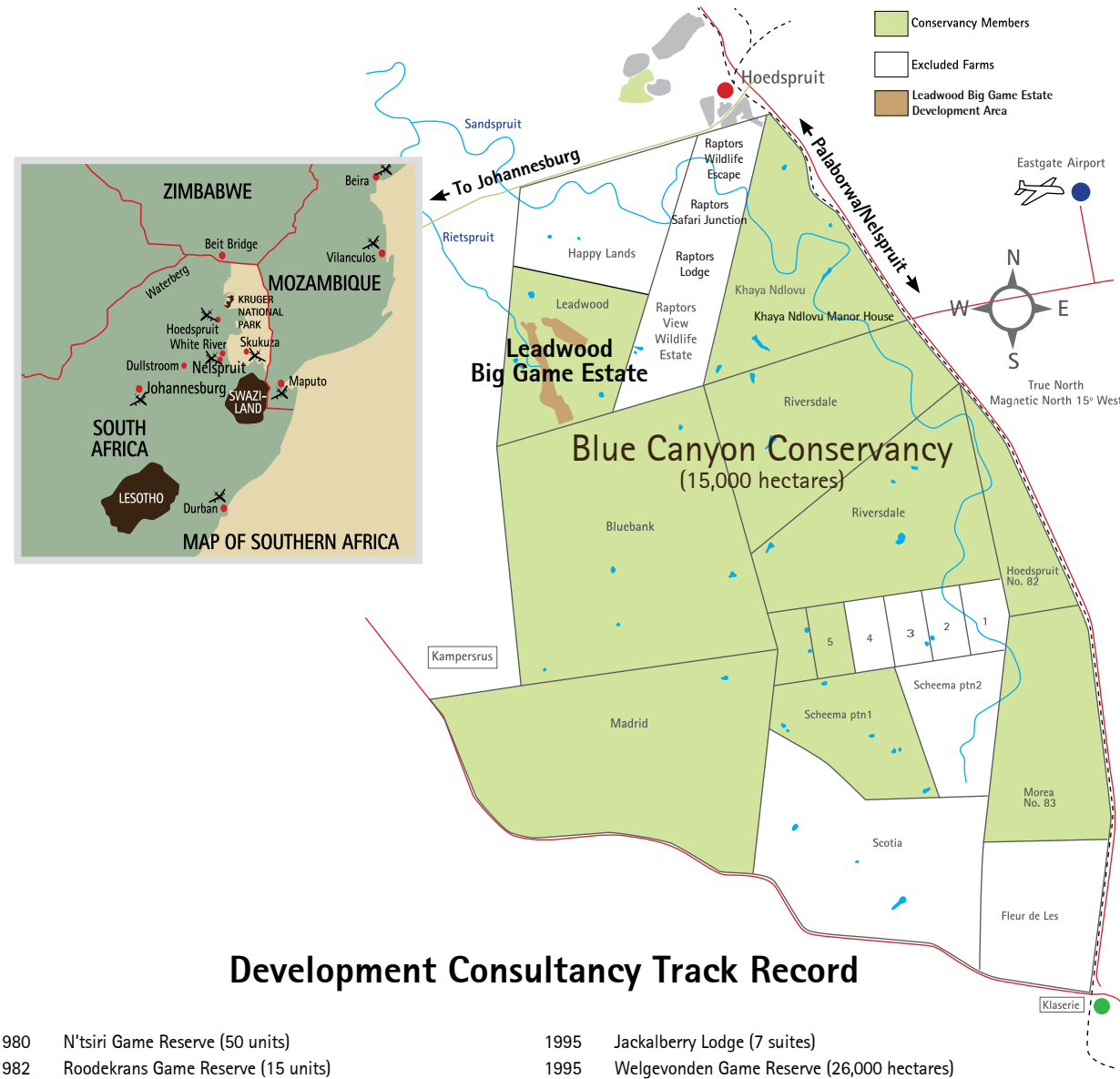
Where Africa's Big Game roam free

Owners of Leadwood Big Game Estate live within the Blue Canyon Conservancy, where Big Game such as elephant, lion, leopard, rhino as well as the plains game roam freely over 15,000-ha of unspoilt bushveld between the Kruger National Park and the Blyde River Canyon.

Perfectly positioned

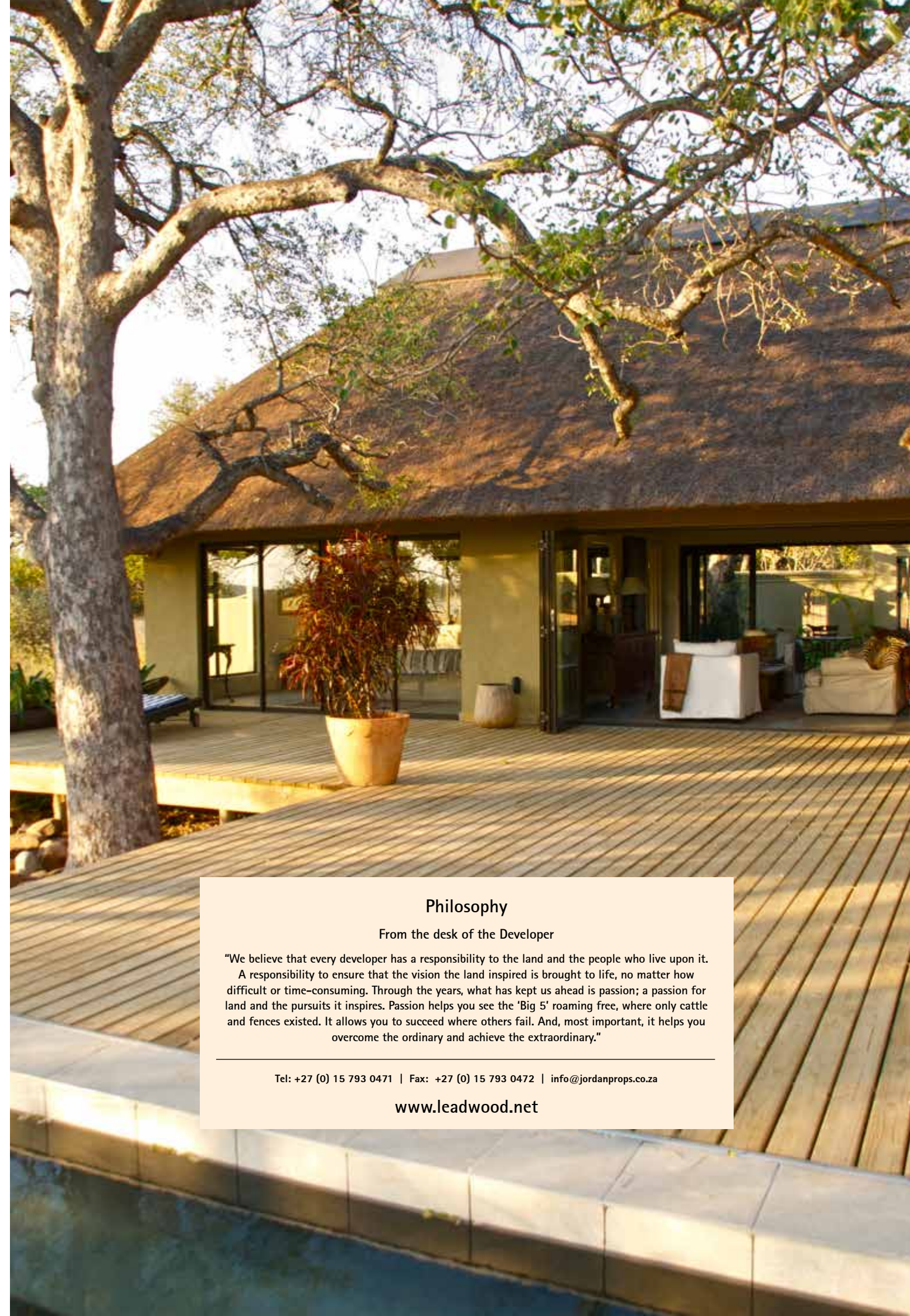
Enjoy hot air ballooning, mountain biking and hiking trails in the Blyde River Canyon. Visit the Reptile Park, Kapama Cheetah Conservation Park and the Moholoholo Wildlife Rehabilitation Centre.

The Orpen and Phalaborwa Gates to the Kruger National Park are less than an hour away.



Development Consultancy Track Record

1980	N'tsiri Game Reserve (50 units)	1995	Jackalberry Lodge (7 suites)
1982	Roodekrans Game Reserve (15 units)	1995	Welgevonden Game Reserve (26,000 hectares)
1983	Ingwelala Game Reserve (210 units)	1999	Vilanculos Coastal Wildlife Sanctuary
1984	Club Mykonos, Greece (40 rooms and suites)		(30,000 hectares/54 residential sites and 120 bed lodges)
1988	Lake Longmere Country Estate (25 luxury homes)	2000	Raptors View Wildlife Estate (304 stands)
1989	Pinelake Timeshare (34 chalets)	2000	Waterbuck Lodge (4 chalets)
1989	White River Country Estate (328 homes)	2000	Dugong Lodge, Mozambique (28-bed lodge)
1989	Millstream Flyfishing (25 cottages)	2003	Ilha Linene Lodge, Mozambique (8-bed lodge)
1990	Finsbury (25 trout lodges)	2003	Raptors Lodge (20 units)
1991	Thornybush Private Game Reserve (14,500 hectares / 13 luxury lodges)	2004	Khaya Ndlovu Manor House (luxury guesthouse)
1991	Thornybush Game Lodge (40-bed lodge)	2004	Khaya Ndlovu Game Reserve (35 stands)
1992	Tangala Corporate Lodges (4 lodges):	2005	Wild Rivers Nature Reserve (31 stands and lodge site)
	- Monwana - 8 sleeper lodge	2006	Raptors Safari Junction (19 commercial sites)
	- Serondella - 8 sleeper lodge	2008	Blue Canyon Game Conservancy (15,000 hectares)
	- n'Kaya - 8 sleeper lodge	2009	The River Lodge at Thornybush (5 executive suites)
	- Shumbalala - 8 sleeper lodge	2010	Raptors View Wildlife Escape (58 units) Development Consultant
1995	Kayatula Lodge (16-bed private camp)	2011	Leadwood Big Game Estate (94 stands and 32-bed lodge site) Development Consultant



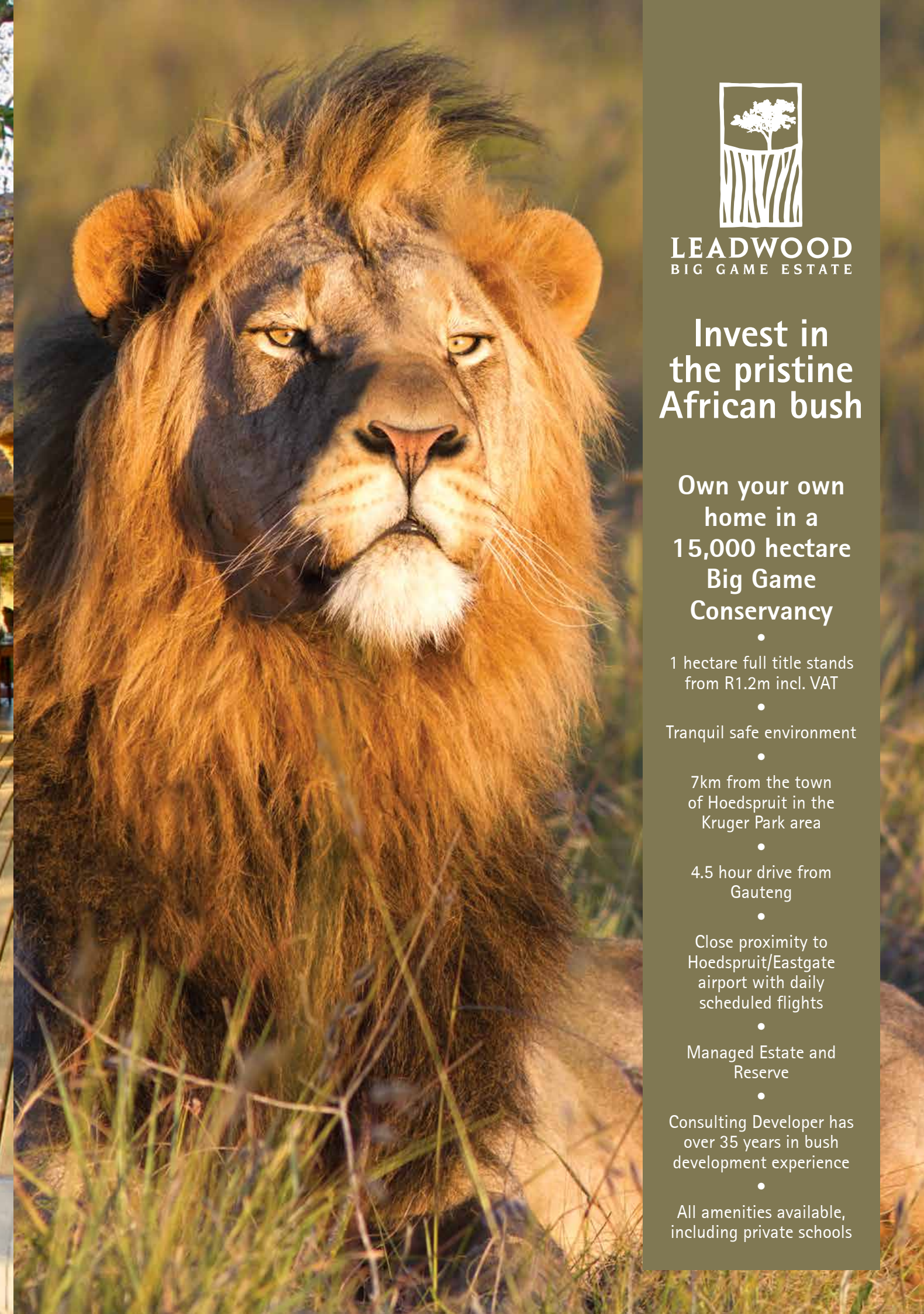
Philosophy

From the desk of the Developer

"We believe that every developer has a responsibility to the land and the people who live upon it. A responsibility to ensure that the vision the land inspired is brought to life, no matter how difficult or time-consuming. Through the years, what has kept us ahead is passion; a passion for land and the pursuits it inspires. Passion helps you see the 'Big 5' roaming free, where only cattle and fences existed. It allows you to succeed where others fail. And, most important, it helps you overcome the ordinary and achieve the extraordinary."

Tel: +27 (0) 15 793 0471 | Fax: +27 (0) 15 793 0472 | info@jordanprops.co.za

www.leadwood.net



LEADWOOD
BIG GAME ESTATE

Invest in
the pristine
African bush

Own your own
home in a
15,000 hectare
Big Game
Conservancy

•
1 hectare full title stands
from R1.2m incl. VAT

•
Tranquil safe environment

•
7km from the town
of Hoedspruit in the
Kruger Park area

•
4.5 hour drive from
Gauteng

•
Close proximity to
Hoedspruit/Eastgate
airport with daily
scheduled flights

•
Managed Estate and
Reserve

•
Consulting Developer has
over 35 years in bush
development experience

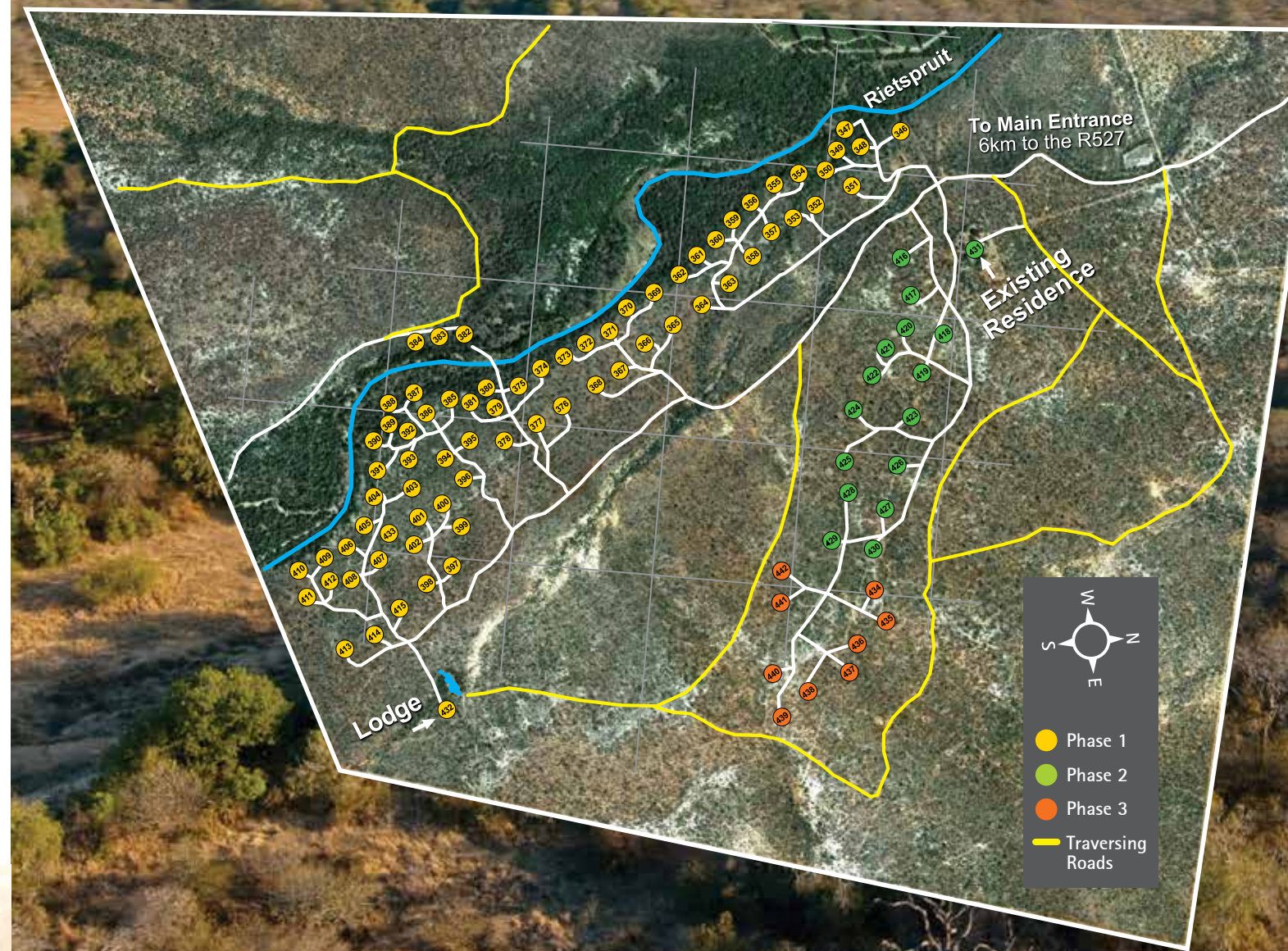
•
All amenities available,
including private schools



Typical architectural layouts of the 2-bed and 4-bed luxury bush style homes with extension options available. (Furnishings excluded and swimming pool an optional extra)

Leadwood Big Game Estate Site Plan

94 one-hectare stands covering 984 hectares of pristine African bushveld in a 15,000 hectare Big Game Conservancy



Build your 2, 3 or 4 bedroomed home

Own your home in a Big Game Conservancy

Leadwood Big Game Estate is 984 hectares and situated within the 15 000 hectare Blue Canyon Conservancy and offers 94 one hectare full title, exclusive stands.

Architecture to suit your lifestyle

Flexible yet strict architectural guidelines will ensure that the aesthetics and authenticity of the Estate will not be compromised.

Luxury bush style homes can be constructed from R1.2 million (including VAT, excluding stand)

Few are privileged enough to own their own freehold title property on a Big Game Estate in the pristine African bushveld, now is your opportunity.

Terms and conditions apply and subject to availability. (Exclusive and Limited)

