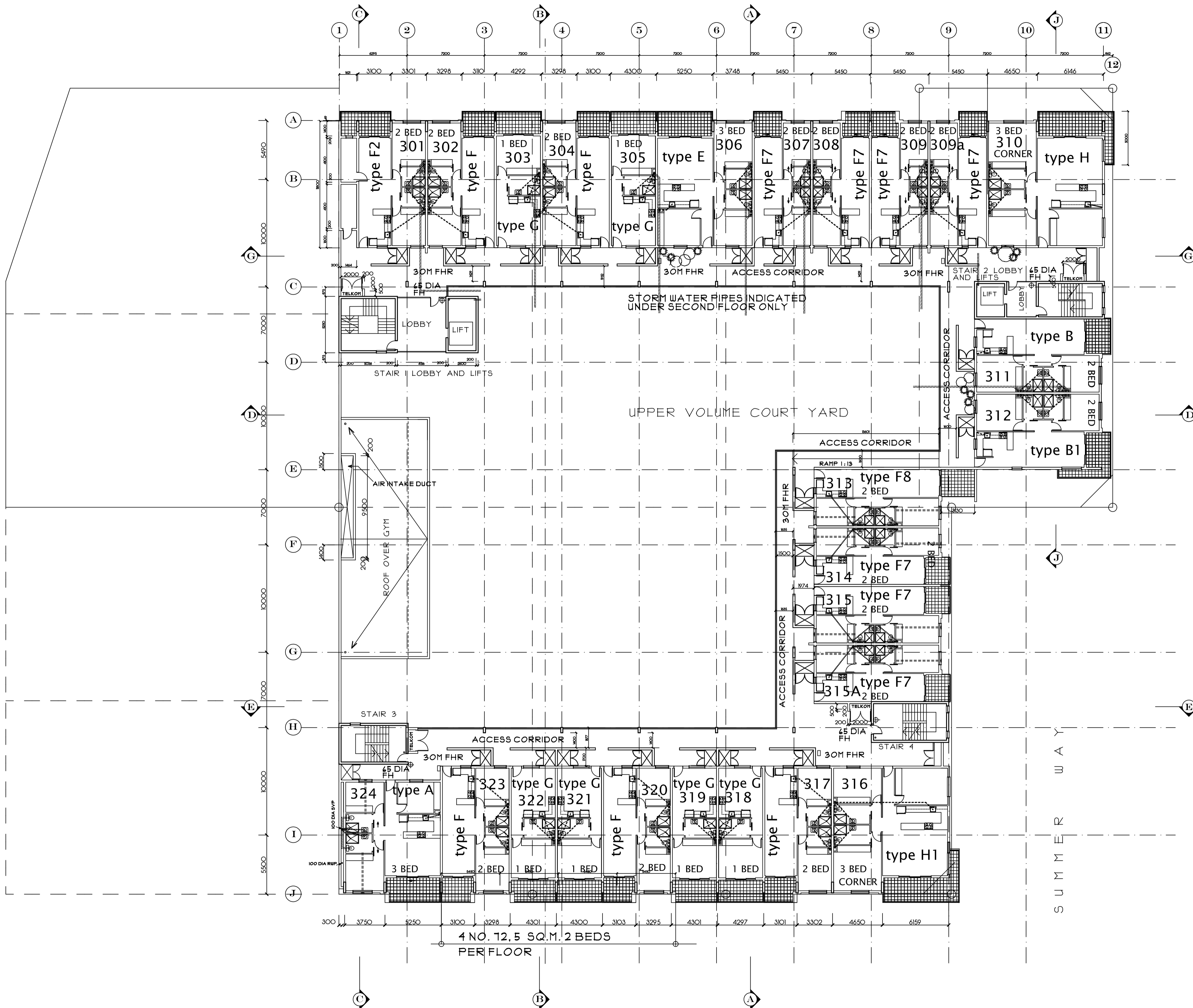


UMHLANGA RIDGE BOULEVARD

LUNAR ROW



4 NO. 12.5 SQ.M. 2 BEDS PER FLOOR

AURORA DRIVE
26 NO. UNITS

3RD FLOOR PLAN

READ IN CONJUNCTION WITH DWG. NO. 001 OIB., and 019. FOR DETAILED UNIT LAYOUTS ALL DRAWINGS AND DETAILS WILL COMPLY WITH SANS 10400

NO	DATE	DESCRIPTION
A	31 OCT 2016	TYPE A OMITTED AND G1 ADDED

20TH OCTOBER 2016 - REVISIONS REMOVED AND DRAWINGS ISSUED FOR CONSTRUCTION

CLIENT
ARCHITECT
REG. NO. 6580

OVERFLOW Design
ARCHITECTS. cc
REGISTRATION NO. CK 1989/020881/23
CORPORATE MEMBER OF THE SOUTH AFRICAN INSTITUTE OF ARCHITECTS

BARRY L. UPTON
DIP.ARCH.(CS) DIP.PM.(EE) Pr. Arch. MIArch. KZ-NIA. M.S.A.I.B.D.
11, STARLING PLACE GILLITTS 3610
PH (031) 7672029 FAX TO EMAIL 086 7703510
cell 0837757562 Email overflow@iafrica.com
www.overflowdesign.blogspot.com

PROJECT
LE BOULEVARD
NEW APARTMENTS AT
6, LUNAR ROW, UMHLANGA ROCKS FOR
DEXAPHASE (PTY) LTD
PORTION 114 OF ERF 2426
UMHLANGA ROCKS

DRAWING
SUBMISSION DRAWING
TYPICAL STOREY UNITS
2ND., & 3RD., STOREYS

DATE	DECEMBER 2015
SCALE	1 : 200
DRAWN	BARRY UPTON
DRAWING NUMBER	004 A
COMP.REF.NO.	REKESHUmhlanga

