

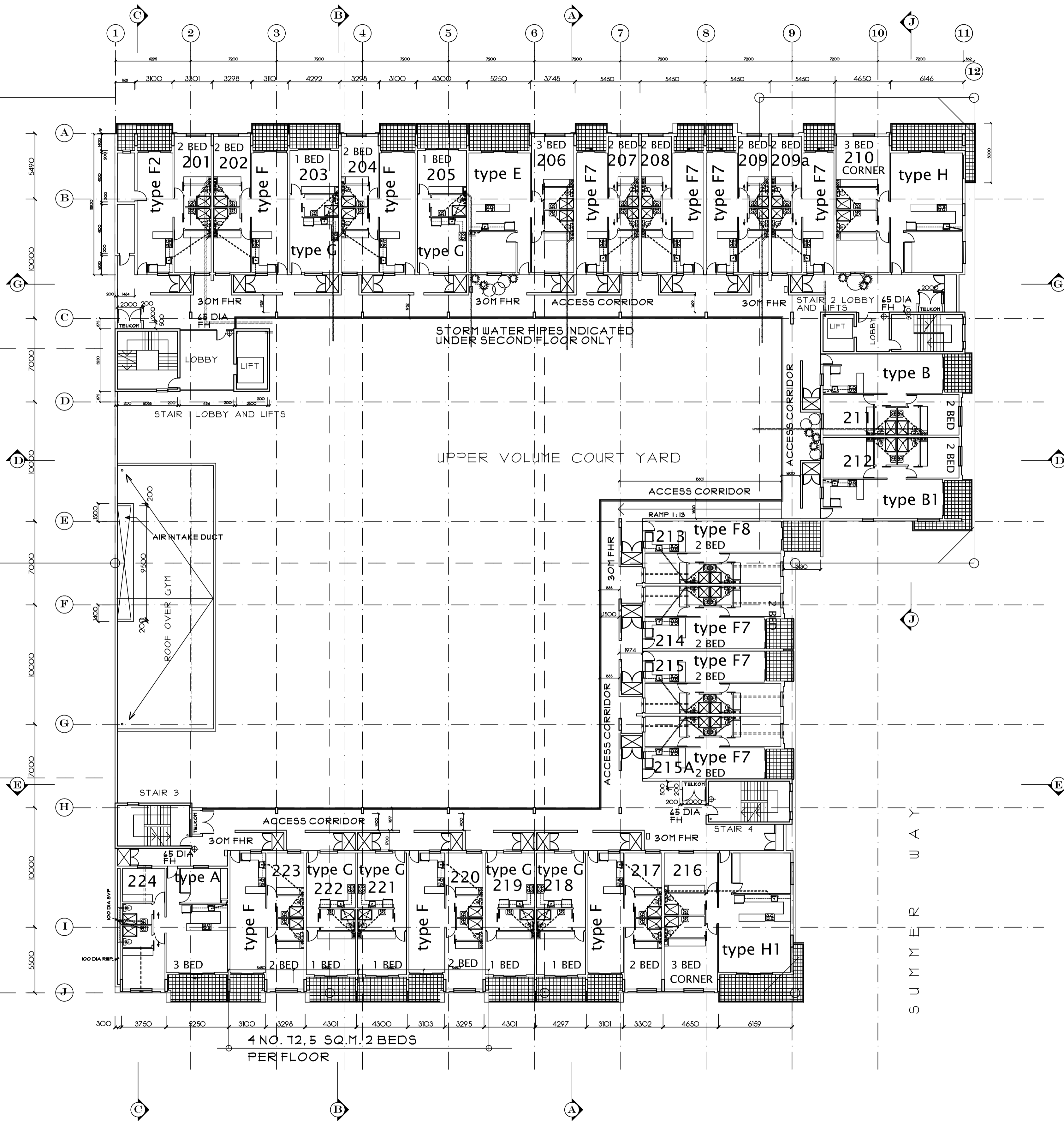
LUNAR ROW

UMHLANGA RIDGE BOULEVARD

SUMNER WAY

AURORA DRIVE  
26 NO. UNITS

# 2ND FLOOR PLAN



4 NO. 12, 5 SQ.M. 2 BEDS  
PER FLOOR

READ IN CONJUNCTION WITH DWG. NO. 001, 018., and 019. FOR DETAILED UNIT LAYOUTS  
ALL DRAWINGS AND DETAILS WILL COMPLY WITH SANS 10400

| REVISIONS |             |                             |
|-----------|-------------|-----------------------------|
| NO        | DATE        | DESCRIPTION                 |
| A         | 31 OCT 2016 | TYPE A OMITTED AND G1 ADDED |

20TH OCTOBER 2016 - REVISIONS REMOVED AND DRAWINGS ISSUED FOR CONSTRUCTION

CLIENT

ARCHITECT  
REG. NO. 6580

**OVERFLOW Design**  
ARCHITECTS. cc

REGISTRATION NO. GK 1989/020881/23  
CORPORATE MEMBER OF THE SOUTH AFRICAN INSTITUTE OF ARCHITECTS

**BARRY L. UPTON**  
DIP.ARCH.(ICS) DIP.PM.(EE) Pr. Arch. MArch. KZ-NIA. M.S.A.I.B.D.  
11, STARLING PLACE GILLITTS 3610  
PH (031) 7672029 FAX TO EMAIL 086 7703510  
cell 0837757562 Email overflow@iafrica.com  
www.overflowdesign.blogspot.com

PROJECT  
**LE BOULEVARD**  
NEW APARTMENTS AT  
6, LUNAR ROW, UMHLANGA ROCKS FOR  
**DEXAPHASE (PTY) LTD**  
PORTION 114 OF ERF 2426  
UMHLANGA ROCKS

DRAWING  
SUBMISSION DRAWING  
TYPICAL STOREY UNITS  
2ND., & 3RD., STOREYS

|                |                |
|----------------|----------------|
| DATE           | DECEMBER 2015  |
| SCALE          | 1 : 200        |
| DRAWN          | BARRY UPTON    |
| DRAWING NUMBER | 004 A          |
| COMP. REF. NO. | REKESHumhlanga |

