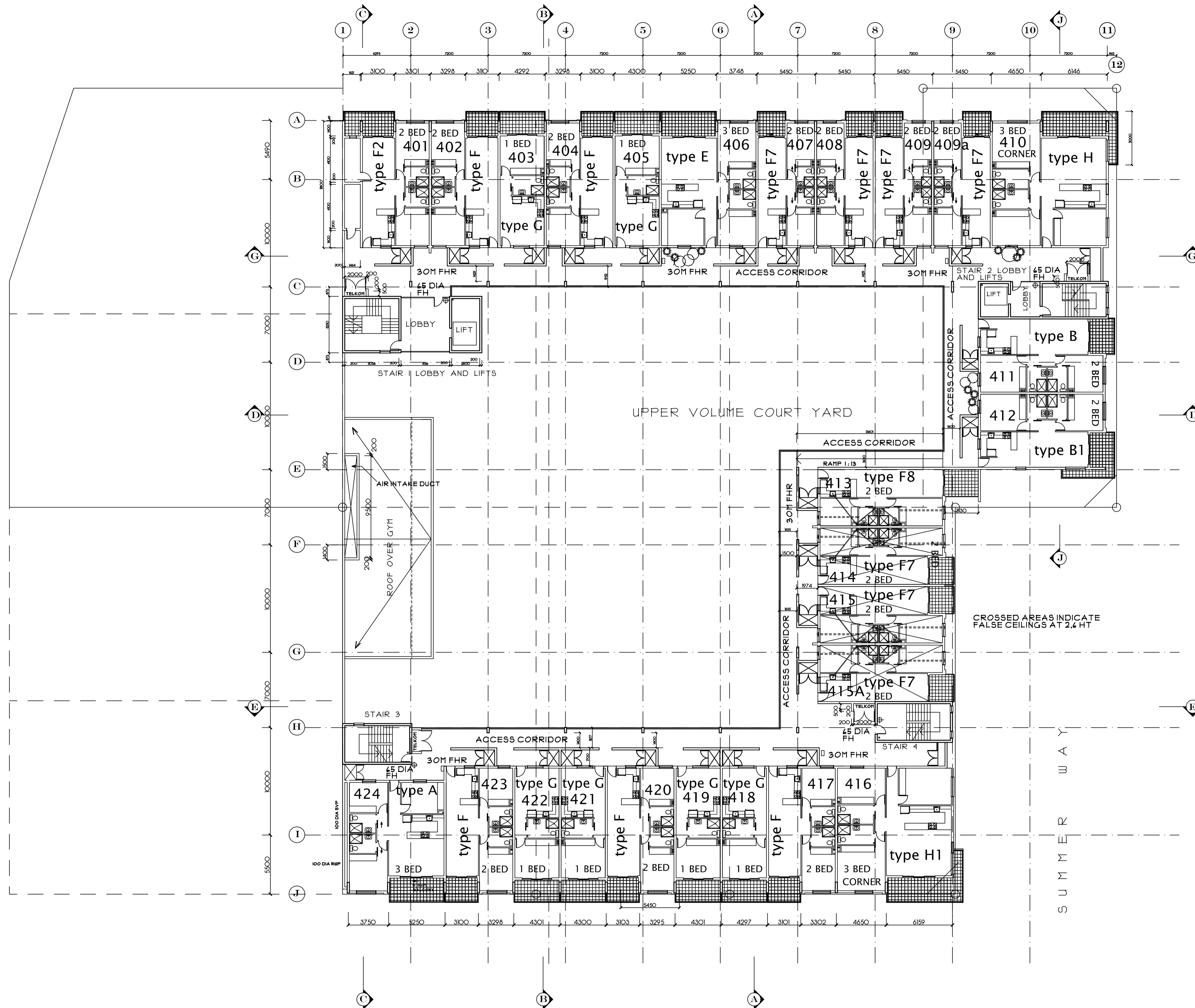


UMHLANGA RIDGE BOULEVARD

LUNAR ROW



26 NO. UNITS

# 4TH FLOOR PLAN

READ IN CONJUNCTION WITH DWG. NO. 007 OIB., and OI9. FOR DETAILED UNIT LAYOUTS  
ALL DRAWINGS AND DETAILS WILL COMPLY WITH SANS 10400

REVISIONS		
NO.	DATE	DESCRIPTION
A	31 OCT 2016	TYPE A OMITTED AND G1 ADDED

20TH OCTOBER 2016 - REVISIONS REMOVED AND DRAWINGS ISSUED FOR CONSTRUCTION

CLIENT

ARCHITECT  
REG. NO. 6580

**OVERFLOW**  
**Design**  
ARCHITECTS. cc

REGISTRATION NO. CK 1989/020881/23  
CORPORATE MEMBER OF THE SOUTH AFRICAN INSTITUTE OF ARCHITECTS

**BARRY L. UPTON**  
DIP.ARCH.(ICS) DIP.PM.(EE) Pr. Arch. MArch. KZ-NIA. M.S.A.I.B.D.  
11, STARLING PLACE GILLITTS 3610  
PH (031) 7672029 FAX TO EMAIL 086 7703510  
cell 0837757562 Email overflow@afrika.com  
www.overflowdesign.blogspot.com

PROJECT  
**LE BOULEVARD**  
NEW APARTMENTS AT  
6, LUNAR ROW, UMHLANGA ROCKS  
FOR  
**DEXAPHASE (PTY) LTD**  
PORTION 114 OF ERF 2426  
UMHLANGA ROCKS

DRAWING  
SUBMISSION DRAWING  
4TH STOREY

DATE	DECEMBER 2015
SCALE	1 : 200
DRAWN	BARRY UPTON
DRAWING NUMBER	008 A
COMP.REF.NO.	REKESHumhlanga