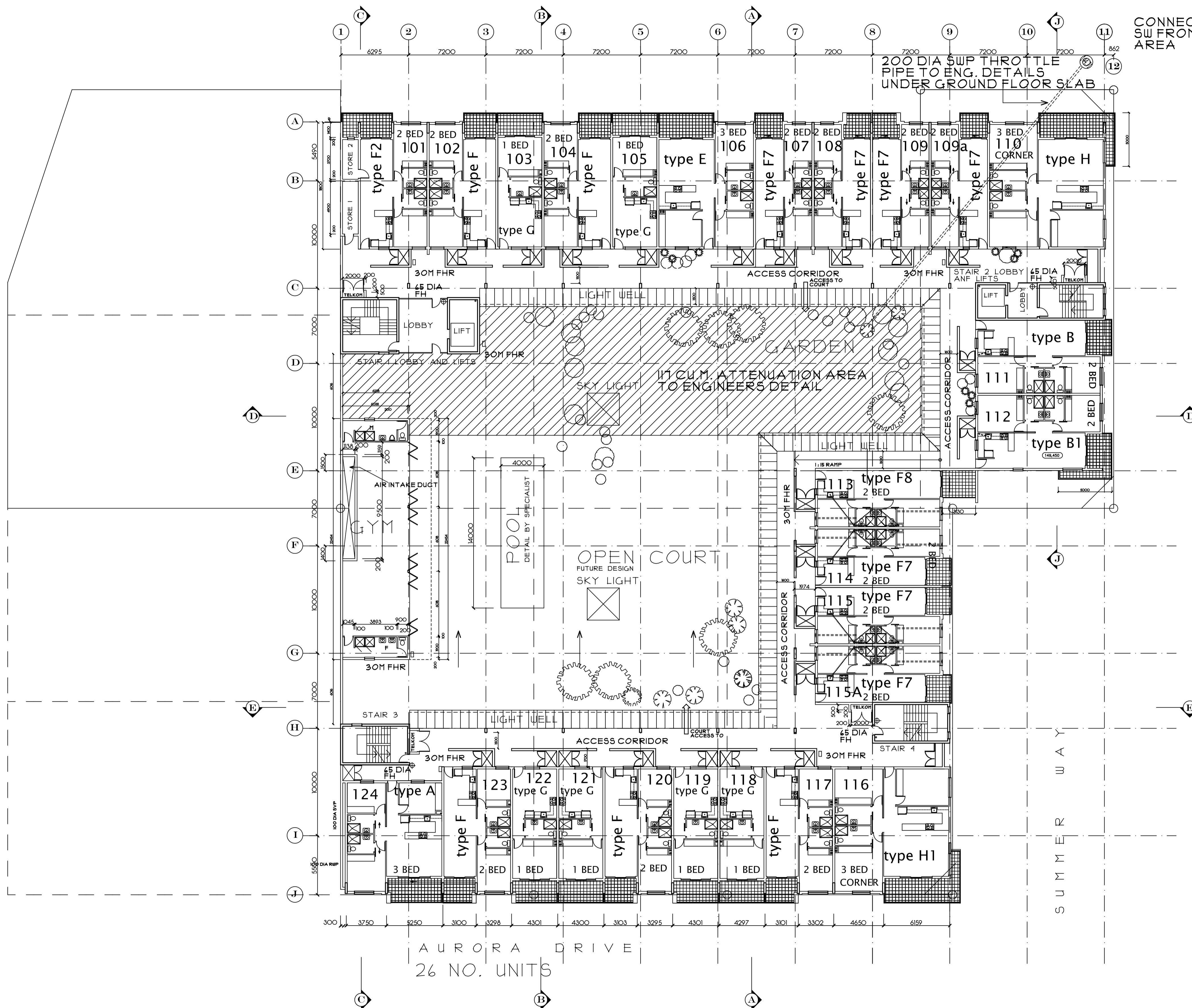


UMHLANGA RIDGE BOULEVARD

LUNAR ROW

CONNECTION MH TO SE FROM ATTENUATION AREA



READ IN CONJUNCTION WITH DWG. NO. 001 018., and 019. FOR DETAILED UNIT LAYOUTS
ALL DRAWINGS AND DETAILS WILL COMPLY WITH SANS 10400

REVISIONS		
NO	DATE	DESCRIPTION
A	31 OCT 2016	TYPE A OMITTED AND G1 ADDED
20TH OCTOBER 2016 - REVISIONS REMOVED AND DRAWINGS ISSUED FOR CONSTRUCTION		
CLIENT		
ARCHITECT REG. NO. 6580		

OVERFLOW Design
ARCHITECTS. cc

REGISTRATION NO. CK 1989/020881/23
CORPORATE MEMBER OF THE SOUTH AFRICAN INSTITUTE OF ARCHITECTS

BARRY L UPTON
DIP.ARCH.(CS) DIP.PM.(EE) Pr. Arch. MArch. KZ-NIA. M.S.A.I.B.D.
11, STARLING PLACE GILLITTS 3610
PH (031) 7672029 FAX TO EMAIL 086 7703510
cell 0837757562 Email overflow@iafrica.com
www.overflowdesign.blogspot.com

PROJECT
LE BOULEVARD
NEW APARTMENTS AT
6, LUNAR ROW, UMHLANGA ROCKS
FOR
DEXAPHASE (PTY) LTD
PORTION 114 OF ERF 2426
UMHLANGA ROCKS

DRAWING
SUBMISSION DRAWING
FIRST STOREY UNITS
AND COURT YARD

DATE	DECEMBER 2015
SCALE	1 : 200
DRAWN	BARRY UPTON
DRAWING NUMBER	003 A
COMP.REF.NO.	REKESHumhlanga

1ST FLOOR PLAN

