



VITOR CORDON 38

CHIADO

FINISHING MAPS



Residential building



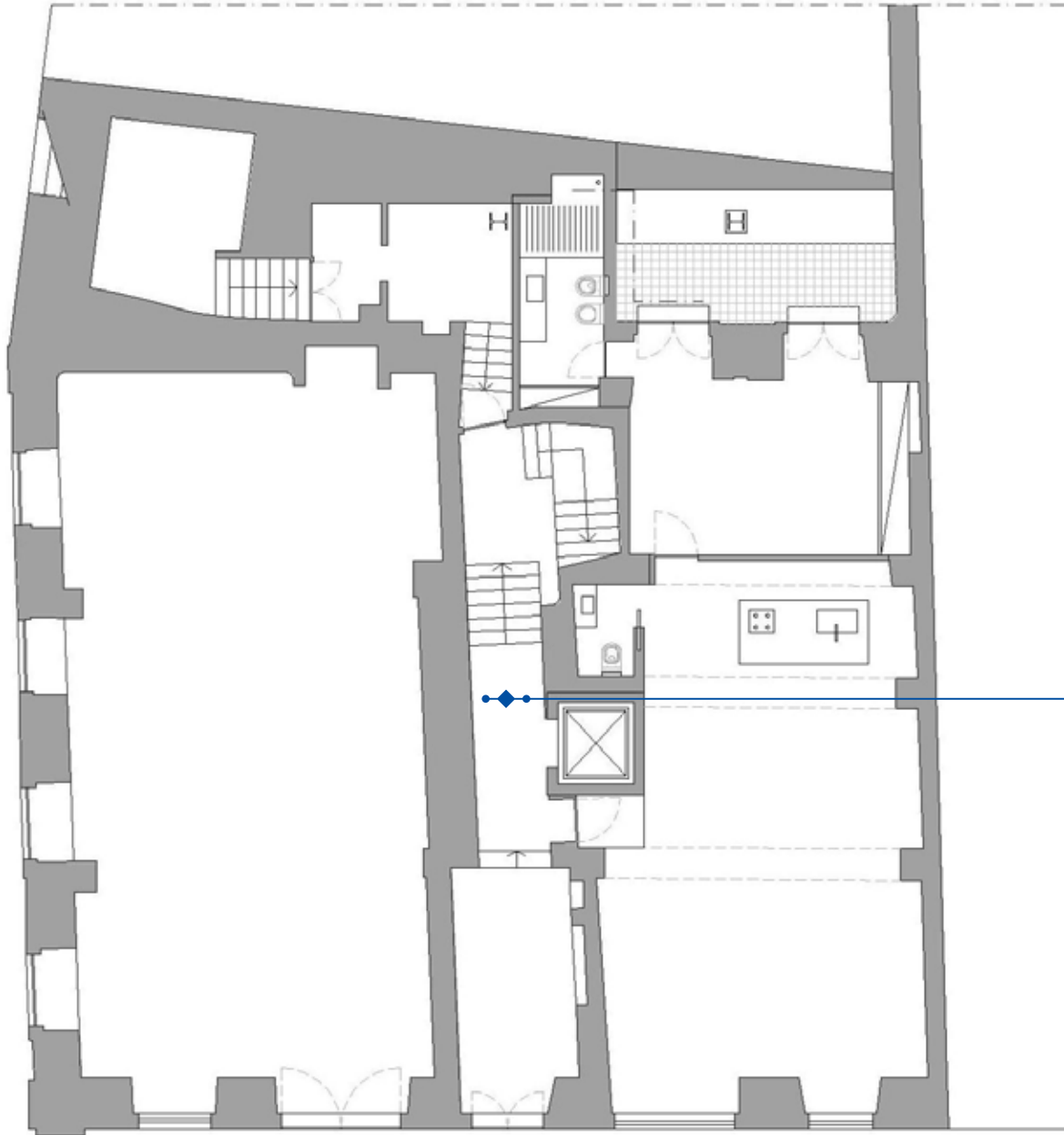
Rua Vitor Cordon nº 36 - 40
2017, Lisbon, Portugal



Finishes Description

Interior

Floor Plan - Level 0



Overall Finishes:

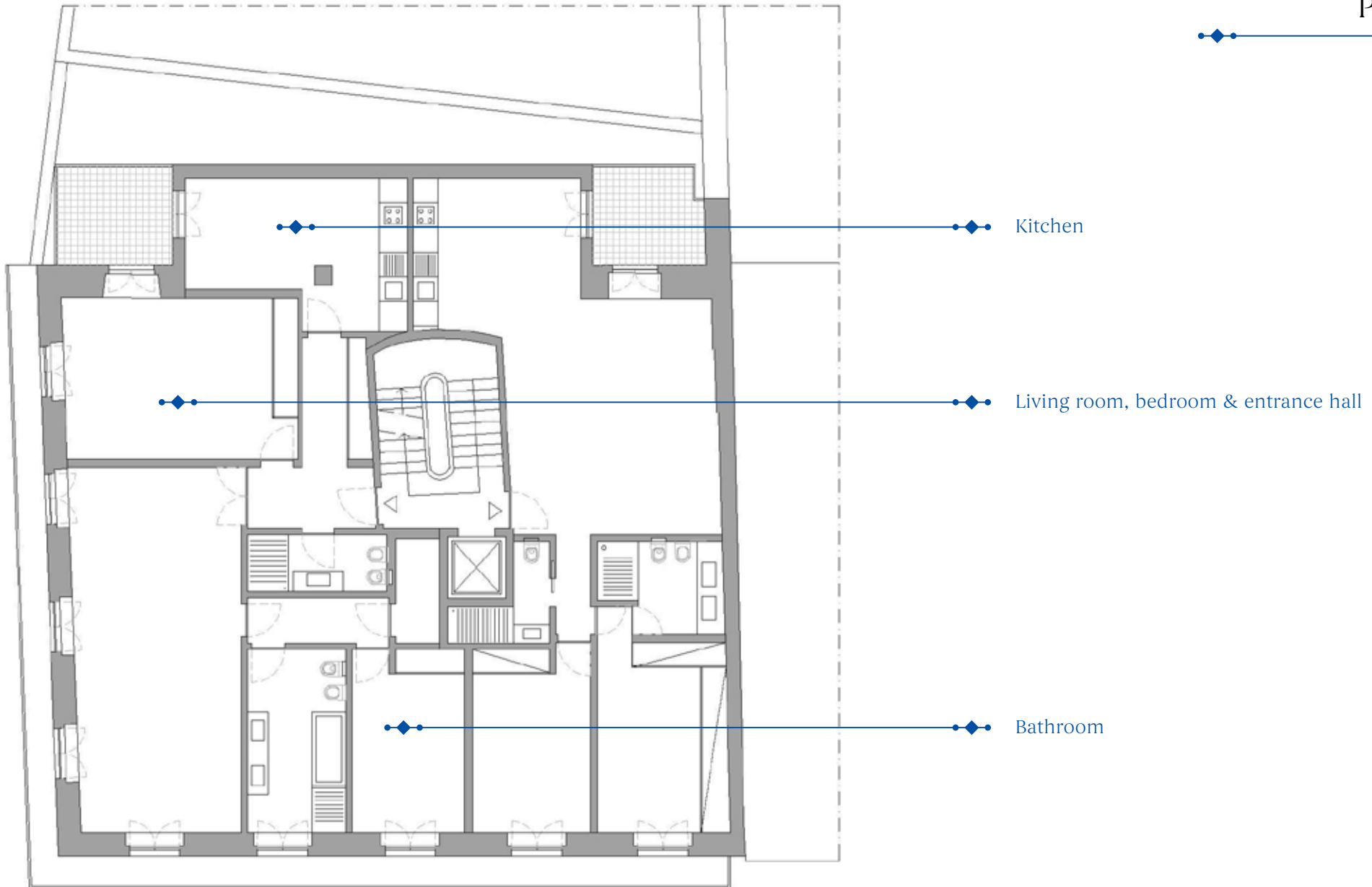
- Apartment entrance - Armored door with flat white panel (ref: Dierre)
- Windows - Double glass , white painted wooden frame (ref: Ogiva Global)
- Existing shutters - White painted
- New shutters - White painted MDF
- Interior doors - White painted with metallic handle (ref: JNF - brushed steel - IN.00.030)
- Electrical accessories - White (ref: Gira F100)
- Exterior metallic handrail- steel painted in dark green

STAIRS & ATRIUM AREA

- Existing stairs and handrail - to maintain
- Pavement - hydraulic mosaic
- Walls - 10x10cm Ceramic tiles (ref: Viuva Lamego)
- Lift (ref: Schmitt Shon)
- Ceiling - White painted plasterboard

Floor Plan - Level 3

Plan type



Overall finishes



ENTRANCE - Armored door with flat white panel

WINDOWS - Double glass , white painted wooden frame

EXISTING SHUTTERS - White painted

NEW SHUTTERS - White painted wooden shutters

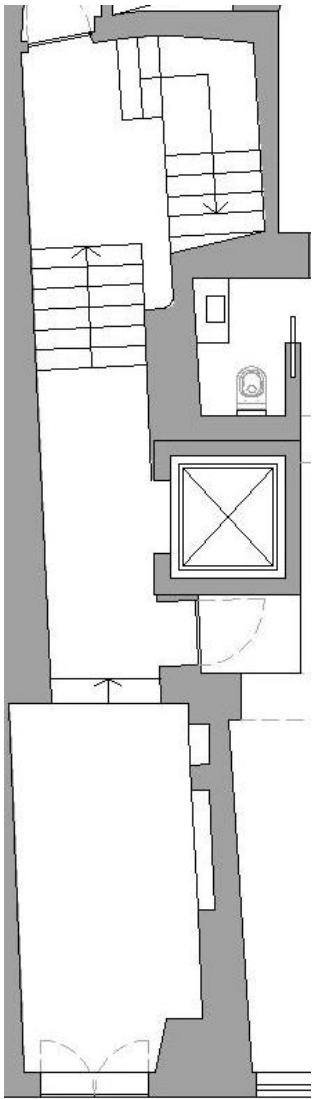
INTERIOR DOORS - White painted with metallic handle

ELECTRICAL ACCESSORIES - White

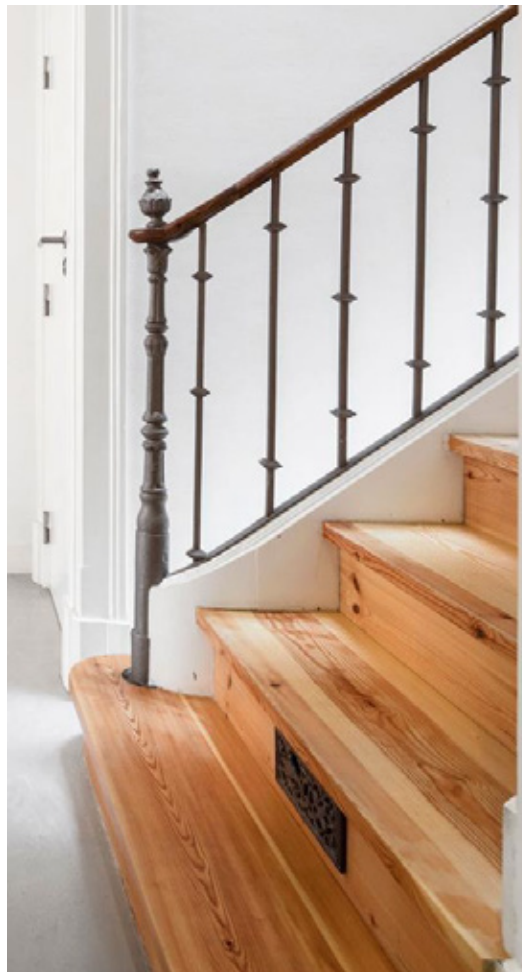
EXTERIOR METALLIC HANDRAIL- Steel painted in dark green

Proposal

Stairs & Atrium area



Floor plan type



Existing stairs and handrail - to maintain

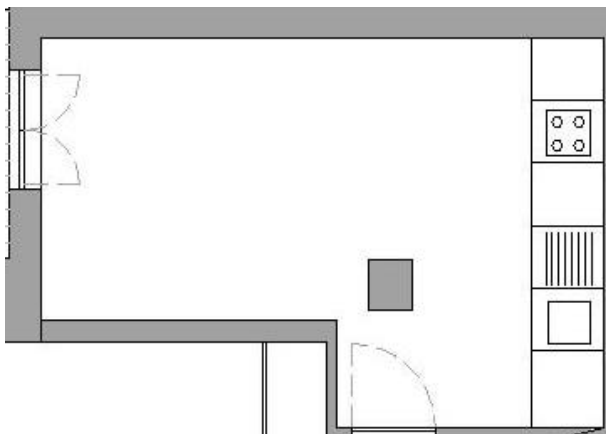


Pavement - hydraulic mosaic



Reference image

Proposal Kitchen



Floor plan type



Kitchen appliances (ref: Bosch/ Smeg)



Kitchen cupboards lacquered in mate-white (ref: Kuc/ Idias)

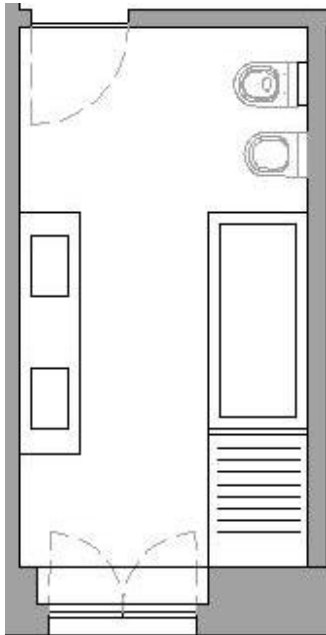


Countertop e roda-tampo
(ref: Silstone Zeus)/ Merengo)



Pine floating floor (ref: Fenestevs fenwwod 220-6) & Wardrobes in MDF
(medium density fiberboard) lacquered in white & hydraulic mosaic
pavement in wet/sink area

Proposal Bathroom



Floor plan type

SINK - White

WHITE WALL - mounted sink

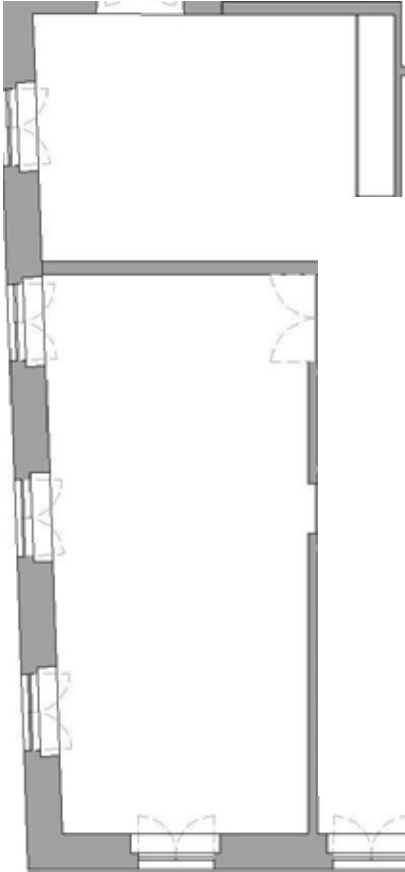
COUNTERTOP - Wenge wood

BIANCONE STONEPAVEMENT AND (SOME) WALLS - Biancone Stone

BATH TUBE/ SHOWER BASE - White

Proposal

Living room, bedroom & entrance hall



Floor plan type

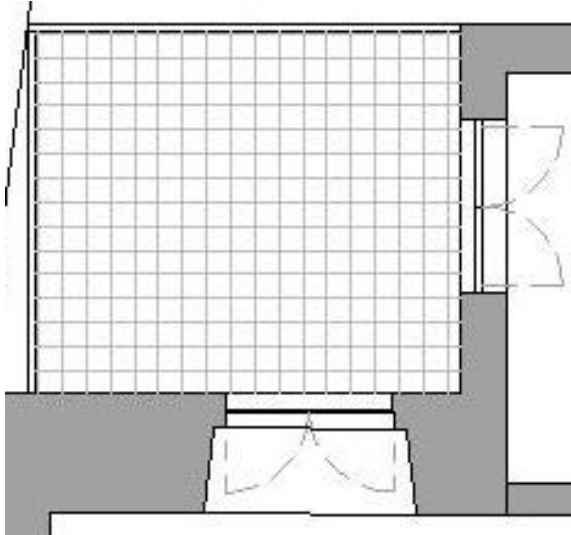


Pine floating floor (ref: Fenesteves fenwwod 220-6) & Wardrobes in MDF (medium density fiberboard) lacquered in white.



Skirting board in MDF (medium density fiberboard) lacquered in white (mate) h=25cm

Proposal Balcony



Floor plan type - Balcony



Reference image



Hydraulic mosaic pavement