



ANAHITA

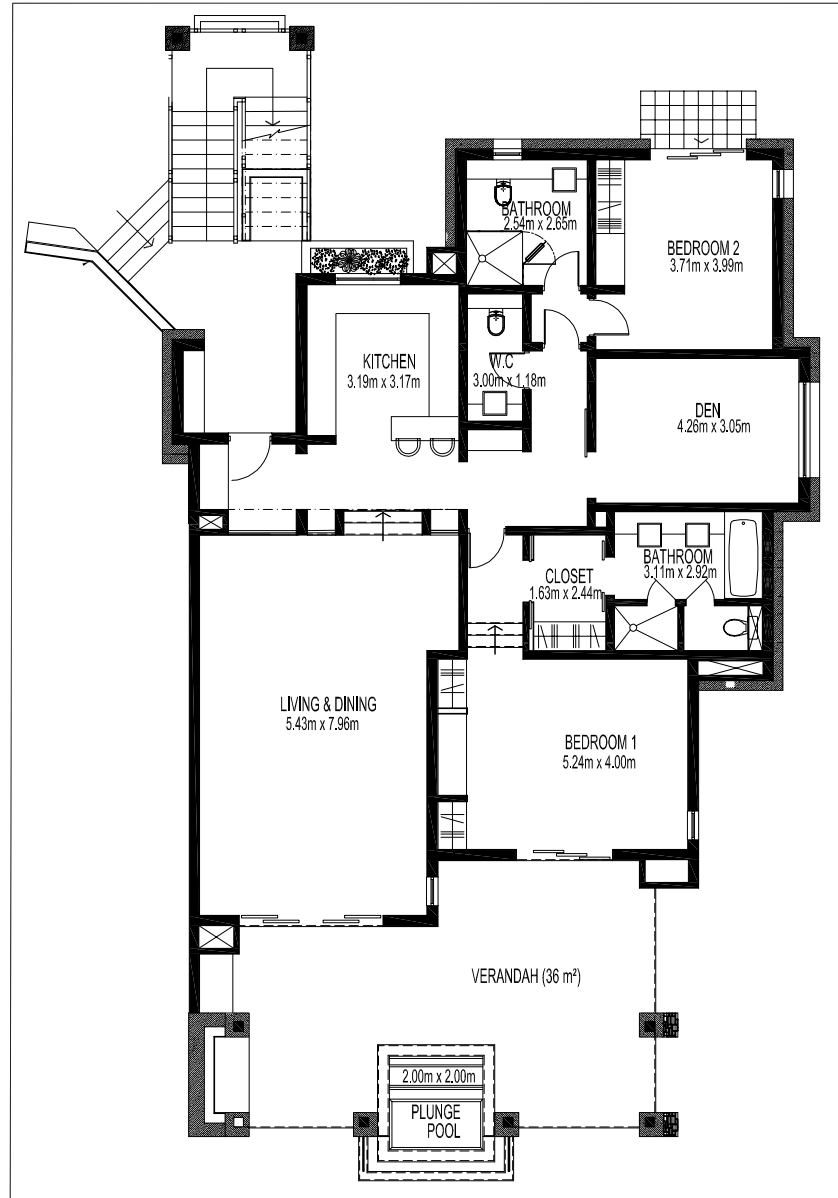


MAURITIUS



APARTMENT N002

FLOOR PLAN



Type 4a: 2+ Bedroom Narrow Frontage Unit
Net Area: 196 m²
Gross Area: 211 m²

APARTMENT NO02

Located in the east of the Island, Anahita The Resort fits into a paradise area of 213 hectares of tropical gardens in the midst of which stretches a 18 hole golf course designed by Ernie Els and managed by the Four Seasons hotel, attached to Anahita. The beach of Anahita, reserved for the inhabitants of the residential area, faces the mythical Ile aux Cerfs which is accessible by a free shuttle boat. The communal facilities include a spectacular infinity pool, a wide range of restaurants and fine shops, a water sports center with scuba diving PADI certified, a wellness center, a gym and clubs for children and teenagers, all managed by Anahita The Resort.

2-Bedrooms en-suite + Den - Ground Floor

Room	Area (m ²)
Kitchen	10.12
Living/Dining	39.62
Bedroom 1	20.96
Closet	3.98
Bathroom 1	9.11
Bedroom 2	14.82
Bathroom 2	7.73
Den	13.00
W.C	3.61
Verandah	39.57
Plunge Pool	4.00

This beautiful 211 sqm apartment is harmoniously designed for an exceptional lifestyle. Generous-sized 39 sqm salon and dining room and 39 sqm covered terrace with 2nd dining area, additional outdoor seating and private plunge pool offer magical views onto the lagoon. Supplementary room for use as bedroom, study or den. Fully-equipped American kitchen. Each bedroom has ensuite bathroom and TV. Master bedroom includes full bath and dressing room. Entrance lobby, storage, laundry, WC, off street parking, fully furnished.

Price: USD \$1.285.000