



ANAHITA



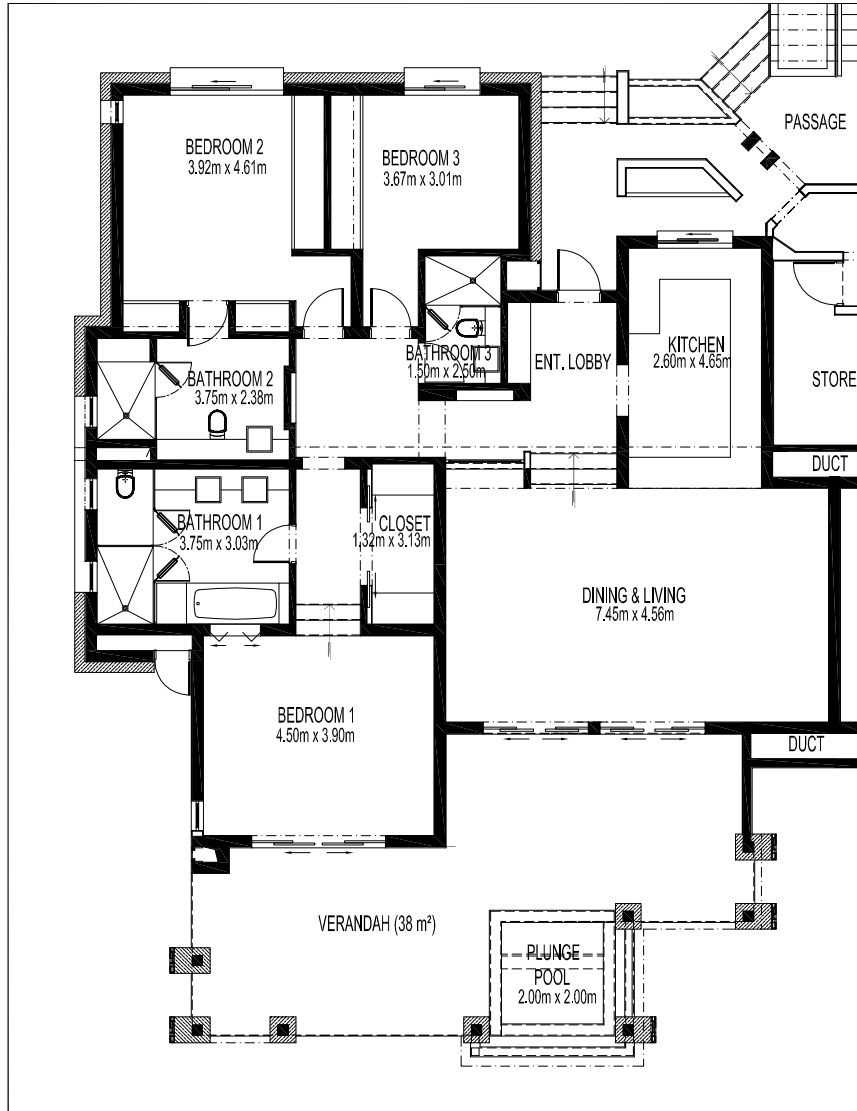
MAURITIUS



APARTMENT J102

FLOOR PLAN

Anahita IRS: Waterfront Residences



Type 6: 3 Bedroom Wide Frontage Unit
Net Area: 204 m²
Gross Area: 215 m²

Room	Area (m ²)
Kitchen	12.09
Living/Dining	33.97
Bedroom 1	17.55
Closet	4.13
Bathroom 1	11.36
Bedroom 2	18.78
Bathroom 2	8.35
Bedroom 3	12.73
Bathroom 3	3.75
Verandah	38.92
Plunge Pool	4.00

APARTMENT J102

Located in the east of the Island, Anahita The Resort fits into a paradise area of 213 hectares of tropical gardens in the midst of which stretches a 18 hole golf course designed by Ernie Els and managed by the Four Seasons hotel, attached to Anahita. The beach of Anahita, reserved for the inhabitants of the residential area, faces the mythical Ile aux Cerfs which is accessible by a free shuttle boat. The communal facilities include a spectacular infinity pool, a wide range of restaurants and fine shops, a water sports center with scuba diving PADI certified, a wellness center, a gym and clubs for children and teenagers, all managed by Anahita The Resort.

3-Bedrooms - First Floor

This prestigious apartment boast a generous living space of 215 sqm which is ideal for indoor and outdoor living. The generous external veranda of 40 sqm is covered and includes private plunge pool, living and dining area, while offering perfect views onto the golf course. Fully-equipped American kitchen overlooks a large 34 sqm salon and dining room. Each bedroom includes closet space and TV. Master bedroom has full bath and dressing room. 2 en-suite bathrooms + 1 family bathroom. Entrance lobby, storage, laundry, off street parking, fully furnished

Price: USD \$850.000