



ANAHITA



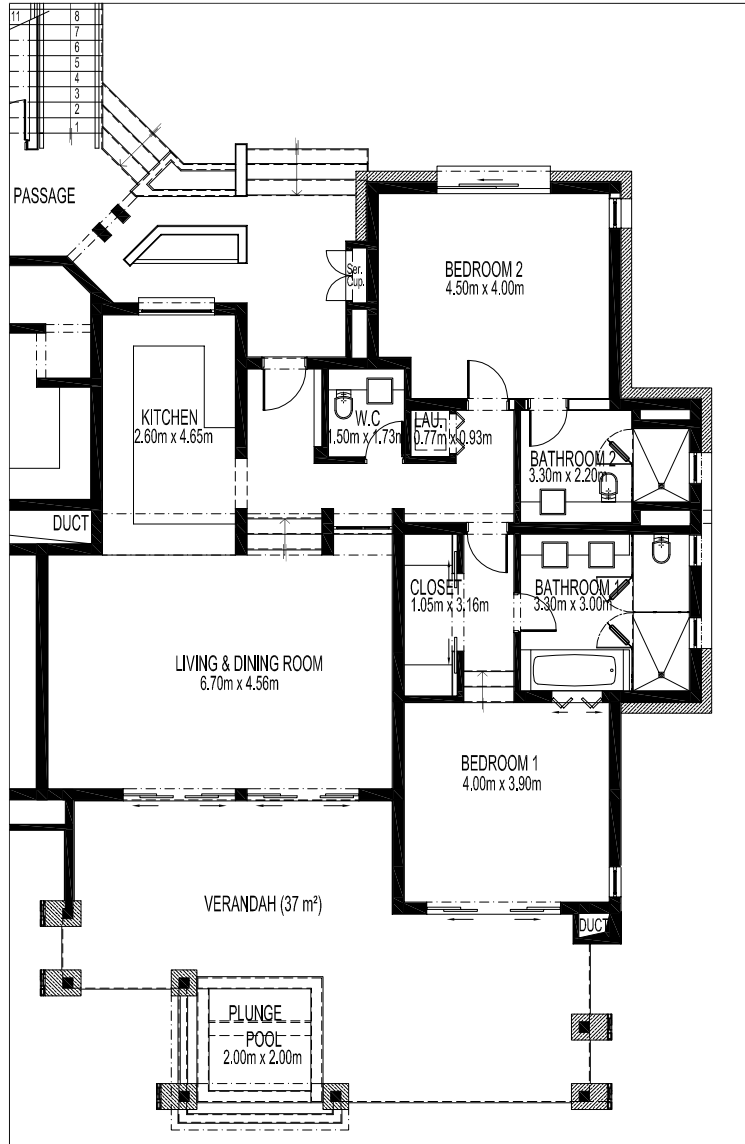
MAURITIUS



**APARTMENT G102**

FLOOR PLAN

Anahita IRS: Waterfront Residences



Type 2: 2 Bedroom Wide Frontage Unit  
Net Area: 167 m<sup>2</sup>  
Gross Area: 181 m<sup>2</sup>

Room	Area (m <sup>2</sup> )
Kitchen	12.09
Laundry	0.71
Living/Dining	33.55
Bedroom 1	15.60
Closet	3.33
Bathroom 1	10.09
Bedroom 2	17.49
Bathroom 2	6.42
W.C.	2.60
Verandah	37.90
Plunge Pool	4.00

# APARTMENT G102

Located in the east of the Island, Anahita The Resort fits into a paradise area of 213 hectares of tropical gardens in the midst of which stretches a 18 hole golf course designed by Ernie Els and managed by the Four Seasons hotel, attached to Anahita. The beach of Anahita, reserved for the inhabitants of the residential area, faces the mythical Ile aux Cerfs which is accessible by a free shuttle boat. The communal facilities include a spectacular infinity pool, a wide range of restaurants and fine shops, a water sports center with scuba diving PADI certified, a wellness center, a gym and clubs for children and teenagers, all managed by Anahita The Resort.

## 2-Bedrooms en-suite - First Floor

This cosy and elegant First Floor apartment features a living space of 180 sqm, ideal for relaxing and enjoying the spectacular views onto the golf course. The spacious 40 sqm covered terrace offers a private plunge pool, open dining area and external seating. The fully-equipped American kitchen overlooks a large 34 sqm interior salon and dining room. Each bedroom has ensuite bathroom and TV. Master bedroom includes full bath and dressing room. Entrance lobby, storage, laundry, WC, off street parking, fully furnished.

**Price: USD \$830.000**